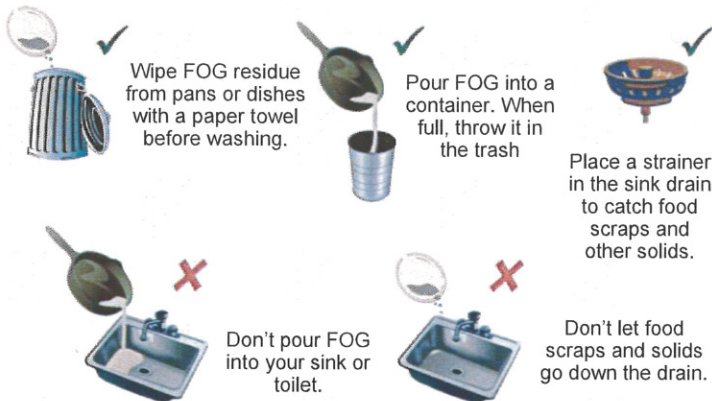
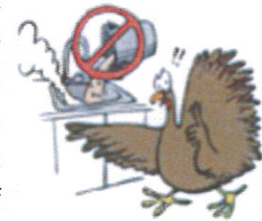


Let's work together to save water and save money

FATS, OILS AND GREASE (FOG)

Fats, oil and grease, also known as FOG, causes sewer blockages, leading to spills and overflows that are hazardous to our health. These spills can result in damage to our homes; pollute our local waterways and groundwater; and harm fish and wildlife habitats. The good news is, community members like us have the power to easily prevent damage from FOG, contributing to a better quality of life here at Diablo Grande.

FOG in liquid form may not seem harmful, but don't let that fool you. As FOG cools, it congeals and hardens, making it a harmful substance for the sewage system. It sticks to the inner lining of drainage pipes and restricts the wastewater flow, eventually causing a blockage. Using detergents or bleach may appear to help, but this is not the case. It is only a temporary solution. FOG will soon return to its thick, solid state—cleaners just send the FOG further down the sewage line. FOG build up is the number one cause of public and private sewer spills. Luckily, these situations are entirely preventable.



How should FOG be handled at home?

To dispose of FOG properly, follow these simple steps:

- ◇ Never pour FOG into your sink or toilet.
- ◇ Pour FOG into a can – a coffee can works well - store it to be reused until full.
- ◇ When the can is full, throw it in the trash.
- ◇ When there is FOG residue in a pan or on a dish, wipe it with a paper towel before washing and throw that towel in the trash.
- ◇ Also, place a strainer in the kitchen sink drain to catch food scraps and other solids, then empty the strainer into the trash.

What happens when FOG isn't properly disposed?

A wastewater sewer system works similarly to the circulatory system of the human body. Wastewater flows through pipes, is pumped at the pump stations, and is cleaned by the wastewater plant. FOG creates blockages within the sewer system that can lead to system failure as it builds up. FOG clings to the walls of the sewer system. FOG builds up one layer at a time making a smaller, narrower path for the water to travel through.

FOG in the sewer system can cause:

- ◆ Raw sewage overflowing into homes – clean up is expensive and unpleasant, and often must be paid for by WHWD customers
- ◆ Raw sewage over flowing into yards, streets and parks
- ◆ Exposure to disease-causing organisms
- ◆ An increase in operation and maintenance costs for WHWD, bringing about higher sewer bills for WHWD customers.

Sewer Blockage Formation



The start of a blocked pipe begins when grease and solids collect on the top and sides of the pipe interior.



The build-up increases over time when grease and other debris are washed down the drain.



Excessive accumulation will restrict the flow of wastewater and can result in a sanitary sewer overflow.